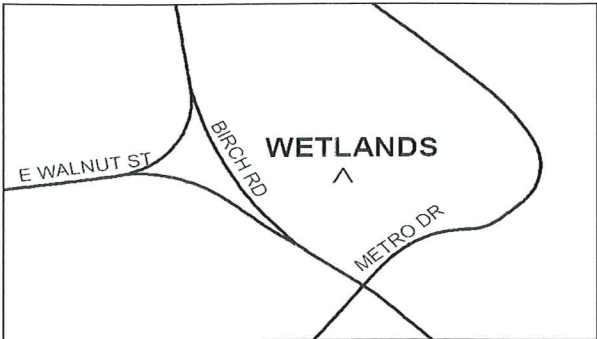


Where Are We Located?

The preserve is seven acres of wetlands located at the headwaters of the *Quittapahilla* Creek. The wetland is situated on the southwest corner of Lebanon County 's CTC property. It can be accessed from Route 422 East (Walnut Street), just east of Home Depot.



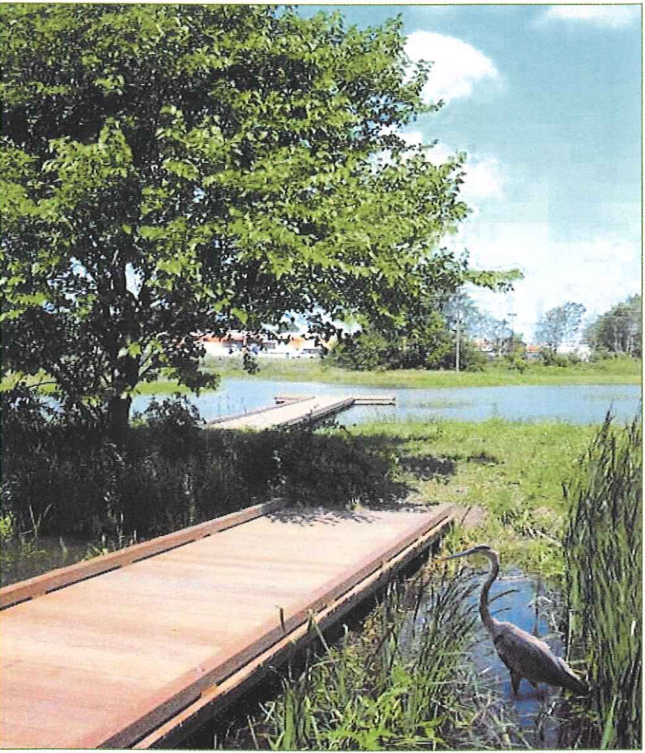
Want to schedule a field trip to the wetlands?
Looking for a community service project?
Interested in supporting our preserve with a financial donation?

CONTACT:

Leigh Beamesderfer, QEWP
Phone: : (717)272-3908 x 4



Quittapahilla Educational Wetland Preserve



Quittapahilla...
spring that flows among the pines

History of Our Wetland

The wetland you are about to explore is a vital link to the health and welfare of our community. Acre for acre, there is more life in a healthy wetland than there is in almost any other type of habitat. Muskrats, turtles, frogs, ducks, herons, fish, aquatic plants and insects abound at the wetland preserve. In addition, the wetland protects our community from flooding and traps sediments and nutrients, filtering our local waters. For years, this wetland has been under the threat of development. But, due to the foresight of community groups such as the *Quittapahilla* Watershed Association, the Career and Technology Center, our local districts, and the Lebanon Conservation District, this site is protected and will now be used as an educational facility.

Over the last few years, the QEWP Committee has enlarged the wetland, installed boardwalks and interpretive signs, built a pavilion with picnic tables, and purchased equipment for exploring this wetland. Through our efforts we have created the Educational Wetland Preserve, a place where schools and community groups can learn about the importance of wetlands and observe the abundant wildlife found here. We invite you to explore and enjoy one of Lebanon County's natural wonders!



Plan Your Visit

The *Quittapahilla* Educational Wetland Preserve, a haven for waterfowl and wetland plants and animals, is ready to be discovered and explored. As a teacher, you can help your students gain knowledge about watersheds, wetlands, and related content in preparation for Pennsylvania's Environment & Ecology Academic Standards. Enroll in one of our fall or spring teacher workshops and then take your class on a field trip to the Wetland Preserve. Conduct water quality tests and soil tests, explore wetland habitats and observe the plants and animals that live there, and use the interpretive signs to learn about the water cycle, our local watershed, and our impact upon it. We invite you to discover the many treasures within the wetland. Call 272-3908, ext. 4 and schedule your field trip today.

This was all made possible by grant monies & funding from The Chesapeake Bay Commission, the Small Watershed Grants Program, and the Pennsylvania Department of Environmental Education Grants.

Benefits of Wetlands

Although wetlands are best known for the abundant wildlife they support, they also provide an important function for people, too.



WETLANDS....

- ◆ Clean the nation's water
- ◆ Trap sediment and capture nutrients from waters that flow through them
- ◆ Reduce soil erosion
- ◆ Prevent flooding by absorbing and storing storm water
- ◆ Provide food such as cranberries, blueberries and wild rice
- ◆ Offer areas for fishing, hunting or trapping
- ◆ Provide energy sources
- ◆ Grow trees for lumber
- ◆ Support commercial fisheries

Site includes:

- ◆ Outdoor classroom in pavilion
- ◆ Educational materials/ equipment to explore the wetland
- ◆ Interpretive Signs
- ◆ Boardwalks/ access ponds for water studies

Opportunities include...

- ◆ Comparative studies
- ◆ Hands-on exploration
- ◆ Soil analysis
- ◆ Water analysis
- ◆ Wildlife exploration
- ◆ Class Field Trips
- ◆ Teacher Workshops
- ◆ Scout and Civic Projects
- ◆ Senior Projects
- ◆ Passive recreation and more!

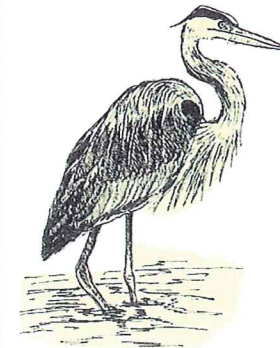
Need assistance with planning/ implementing your field study?

Professional assistance is available through the
Lebanon Conservation District
(717) 272-3908 ext. 4



Who Lives Here?

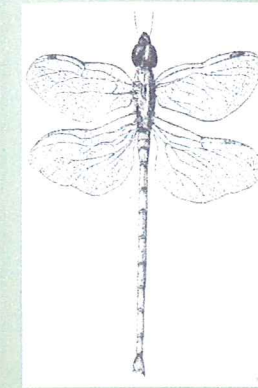
...What You May Find When You Explore The Wetland



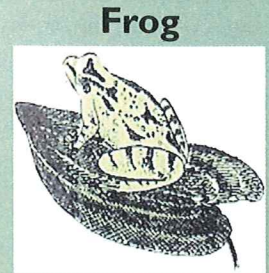
Blue Heron



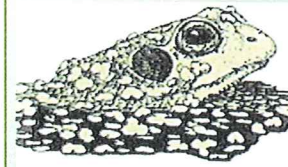
Muskrat



Dragonfly



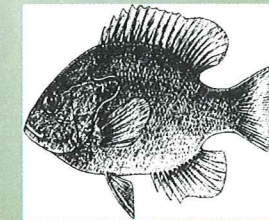
Frog



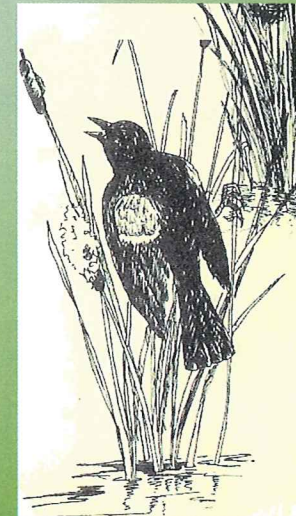
Duckweed



Giant Water Bug



Sunfish



Red-winged Blackbird



Arrowweed



Sedges

Cattail