

LCCD MONTHLY VECTOR SPOTLIGHT:



WOODLAND SNOW POOL MOSQUITO



Aedes communis

Photo by Beatriz Moisset/USDA

When people think about mosquitoes, cold weather doesn't usually come to mind. However, the snow pool mosquito (*Aedes communis*), thrives in colder weather from late winter to early spring. It is a brown mosquito with cream colored bands on its abdomen.

WHERE DO THEY LAY EGGS?

It is usually found in forested areas at high elevations. Larvae are found in deep pools filled with dark-colored water and leaves after snow melts.



PHOTO CREDIT: DR. DIANA CARLE

WHAT DO THEY BITE?

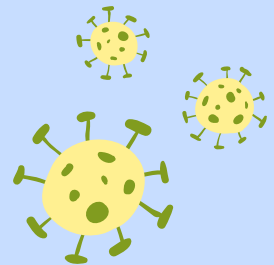
Adult females love to feed on a variety of mammals and they have a limited flight range.

WHEN DO THEY BITE?

They primarily bite during dawn and dusk, but will bite during the day.

WHAT GERMS CAN THEY TRANSMIT?

Aedes communis mosquitoes may transmit Jamestown Canyon virus. They are a major pest in the Pocono Mountains.



HOW TO PREVENT THEIR BITES

1. Avoid excessive activity in forested areas at high elevations during late winter and early spring.
2. Wear EPA-registered bug spray that contains DEET (a common ingredient that prevents mosquito bites).
3. Wear long-sleeved shirts and pants.



References

1. Crans, W. (n.d.). *Aedes communis* (DeGeer). Rutgers University. <https://vectorbio.rutgers.edu/outreach/species/comm.htm>
2. Andreadis, T., Thomas, M., & Shepard, J. (2005). IDENTIFICATION GUIDE TO THE MOSQUITOES OF CONNECTICUT. Connecticut Agricultural Experiment Station.