

dirt & gravel roads

Key Facts about the Dirt & Gravel Road Maintenance Program

Program Participation (Jan 2006)

- 65 counties participate
- 516 municipalities have received grant funding and completed a project

Worksites

- 12,000 worksites are identified and mapped
- 1,445 worksites have been completed totaling 640 miles of unpaved roads

ESM Training

- 4,076 ESM training attendees at 136 trainings, since 1999

Funding

\$4M per year of non-lapsing funds are apportioned to the program. Those funds are distributed annually as follows:

State Conservation Commission

2%

- 2% to administer the program at the state level

County Conservation Districts

up to 25%

- up to 10% for administration
- up to 5% for education
- 10% to fund the Center for Dirt & Gravel Road Studies

Municipalities (or other participant)

at least 73%
\$23M to date

- at least 73% of total program funds go to grant recipients for project completion

dirt & gravel roads

For More Information



State Conservation Commission
Mike Klimkos, Program Coordinator
407 State Agriculture Building
2301 N. Cameron Street
Harrisburg, PA 17110

phone: (717) 787-2103
e-mail: mklimkos@state.pa.us
www.agriculture.state.pa.us/conservation/site/default.asp



Center for Dirt & Gravel Road Studies
The Pennsylvania State University
207 Research Unit D
University Park, PA 16802

phone: (814) 865-5355
toll-free: 866-No-To-Mud
fax: (814)863-6787
e-mail: dirtandgravel@psu.edu
www.dirtandgravelroads.org

The Dirt & Gravel Road Maintenance Program

Program Information

- Pennsylvania's Dirt & Gravel Road Maintenance Program provides dedicated and earmarked funding to eliminate stream pollution caused by dust and sediment from unpaved roads.
- The program and its annual \$4M apportionment for "environmentally sound maintenance" was enacted into law in April 1997, as Section 9106 of the PA Vehicle Code.
- Each year, the State Conservation Commission allocates program monies to county conservation districts based on identified need.
- Townships and other road-owning entities, after successful completion of a required 2-day Environmentally Sensitive Maintenance (ESM) training, are eligible to apply to their county conservation district for maintenance funds to address identified pollution problems using environmentally sound practices.



The Dirt & Gravel Road Maintenance Program

How does the Dirt & Gravel Road Program work?

- Municipalities and state agencies that maintain dirt and gravel roads are eligible to receive funding.
- Eligible entities, with the assistance of their county conservation district, submit a 1-page application and workplan to address a specific verified worksite.
- Environmentally sound maintenance practices and approved products are used to correct pollution problems related to the roadway.
- Grants awarded to successful applicants provide advance payments to aid with project cash flow and complete project work on a timely basis.
- Paperwork requirements are minimal.
- Local decision-making based on locally-defined goals is emphasized.

The Center for Dirt & Gravel Road Studies

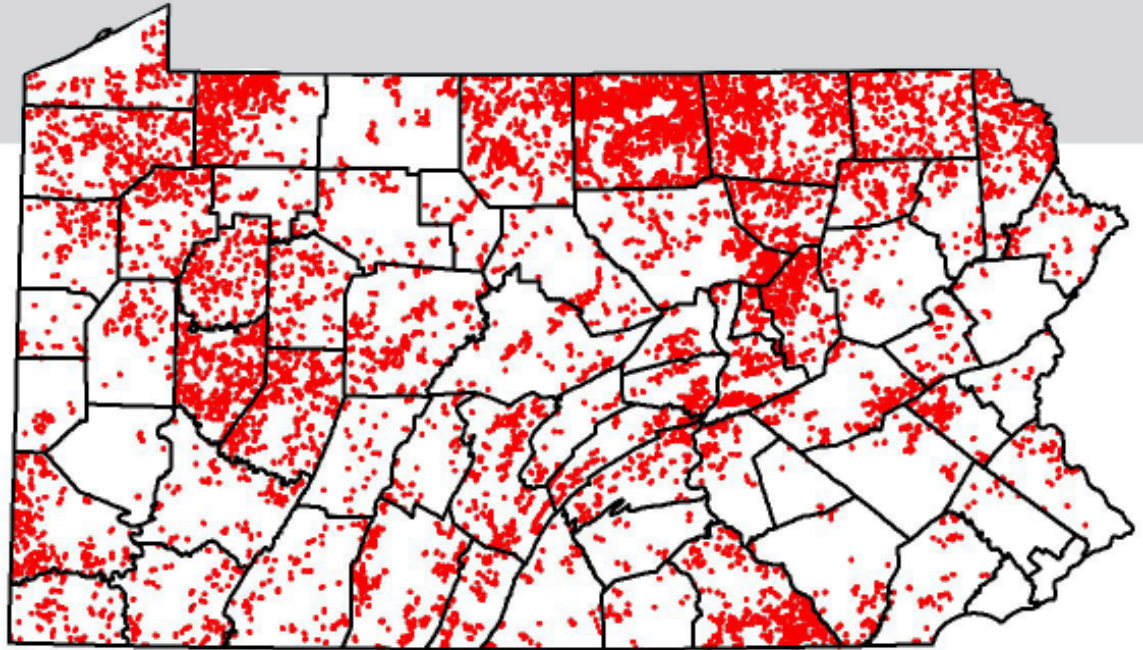
Created in 1999, the Center for Dirt and Gravel Road Studies is contracted by the PA State Conservation Commission (SCC) to provide services to the program. The Center's efforts include:

- Development and delivery of Environmentally Sensitive Maintenance (ESM) training.
- Technical documentation of ESM practices.
- Educational efforts for conservation districts.
- Technical assistance on projects.
- Development and maintenance of a Geographic Information System to track and map projects.
- Advising the SCC on program policies.

12,000 Worksites

A worksite is an identified road segment where road runoff negatively impacts a stream.

Worksites are shown on the map in red.



Dirt & Gravel Road Program Structure

PA State Conservation Commission (SCC)

- Administers the statewide program.
- Distributes funding to county conservation districts (CCDs) based on identified pollution sites.
- Provides administration and project guidance to CCDs.
- Reports annually to the Pennsylvania Legislature on program status.

County Conservation District (CCD)

- Administers the program at local county level.
- Utilizes a 4-member local Quality Assurance Board (QAB) for setting funding priorities, evaluating sites, performing site inspections, and assistance with work plan development.
- Works with grant applicants to develop work plan for projects.
- Distributes funding to grant applicants (*municipalities, PENNDOT, Game Commission, etc.*)
- Submits annual program summary to the SCC.

Municipality (or other program participant)

- Completes 2-day Environmentally Sensitive Maintenance (ESM) training to be eligible for funding.
- Works with the local CCD to develop a workplan on an identified worksite.
- Submits 1-page grant application to the local CCD.
- Carries out project work according to contracted workplan.
- Receives program funding via contract with the CCD.